

## Our vehicles



Type	Number <sup>1)</sup>	Year of manufacture	Length	Power	Floor space
A	23	1970–1983	111.45 m	2,160 kW	870
B	18	1987–1995	112.65 m	2,616 kW	870
C1	17	2000–2005	114.82 m	2,400 kW	912
C2	59	seit 2013	115 m	3,360 kW	940



Type	Number	Year of manufacture	Length	Power	Floor space
R2/R2b	13/55	1994–1997	27.39 m	360 kW	157/164
R3	20	1999–2001	36.58 m	480 kW	218
S1 (Variobahn)	14	2009–2011	33.94 m	360 kW	221
T (Avenio) <sup>2)</sup>	37	seit 2013	36.90 m	600 kW	215



Type	Number	Length	Power	Floor space
Solo bus	100	approx. 12 m	206–271 kW	approx. 65
Articulated bus	283	approx. 18 m	220–271 kW	approx. 100
Trailer bus	57	approx. 23 m	265–271 kW	approx. 130
Mini bus	2	7,4 m	135 kW	24

The fleet will be fully electrified by 2035. The number of electric buses (see selection in photo) is continuing to grow.

1) A train consists of several units. For type A and B, a train generally comprises three twin railcars. Vehicles of type C1 and C2 are articulated trains that are walkable from end to end and are made up of six parts.

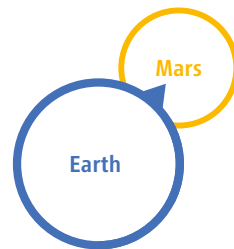
2) Type T (Avenio) consists of two-, three- and four-car trains. Length, power and space are given for the four-part T 4.7.

### Kilometres travelled

Total:

**57,600,000 km**

which approximately corresponds to the shortest distance between Earth and Mars



<b>Underground:</b>	<b>11,800,000 km</b> corresponds to around 290 journeys round the world
<b>Tram:</b>	<b>8,600,000 km</b> corresponds to about 10,700 trips from the International Space Station to the Earth and back
<b>Bus:</b>	<b>37,200,000 km</b> corresponds to around 48 journeys from the Earth to the moon and back

### Kilometres travelled by a vehicle until it is removed from service

<b>Underground:</b>	around <b>5,400,000 km</b>
<b>Tram:</b>	around <b>2,500,000 km</b>
<b>Bus:</b>	around <b>800,000 km</b>

### Cruising speed

Average cruising speed    Maximum speed<sup>3)</sup>

<b>Underground:</b>	<b>35.5 km/h</b>	<b>80 km/h (90 km/h)</b>
<b>Tram:</b>	<b>18.4 km/h</b>	<b>60 km/h (70 km/h)</b>
<b>Bus:</b>	<b>17.9 km/h</b>	<b>60 km/h (up to 100 km/h)</b>

### Time for a wash!

Time a vehicle takes in the washing station until a vehicle is clean:  
**Underground: 36 min.**    **Tram: 15 min.**    **Bus: 3 min.**

3) The maximum operating speed is lower than the maximum speed technically possible, which is in brackets.

### Driven by green electricity

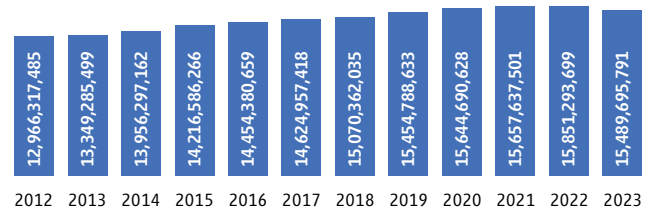
Efficient public transport means environmental protection in action. **Thanks to green electricity, we already run 80 percent of our underground and tram lines in a climate-neutral manner.** The next step is to convert all buses to electric drive by 2035. The e-bus depot that opened in Moosach in late 2022 serves as the basis for this. Our vision: The best of Munich's mobility for a liveable and well-connected city.

### Constant fresh air



**Complete air exchange** in an underground train takes only about three minutes. Ventilation and air conditioning systems, folding windows plus the regular opening of doors at bus and tram stops also ensure fresh air in the passenger compartment in just a few minutes.

### Service offering in usable space kilometres<sup>4)</sup>



### Records

<b>The deepest underground station:</b>	<b>25 m</b>	Karlsplatz (Stachus)
<b>The longest underground line:</b>	<b>27.4 km</b>	U6 Klinikum Großhadern – Garching-Forschungszentrum
<b>The longest tram line:</b>	<b>16.8 km</b>	Tram 17 Amalienburgstraße – St. Emmeram
<b>The longest bus line:</b>	<b>27 km</b>	Bus 157 Am Harras – Germering

4) The service offering is calculated in usable space kilometres. To do this, the kilometres travelled by all vehicles are multiplied by the number of seats or standing places available.

## Our apps



Find them in the App Store or with Google Play

**MVGO** is the free mobility app for Munich and the surrounding area that connects local public transport and sharing offerings. It includes: Mobile tickets, connection information, live departure times, bikes, e-scooters and car-sharing. The Deutschlandticket and the Bavarian discount ticket for students, apprentices and volunteer workers are also available in the MVGO at any time. By the way, we are constantly adding useful features and services to our MVGO app. MVGO – one app for all travel.



**HandyParken München** offers digital parking tickets for paid parking spaces in Munich. HandyParkers can use their login to access the MVGO app and switch to public transport or rent a MVG bike at a flash.

## M-Login

### Your access to Munich's digital services

Our apps work using the M-Login: With your M-Login access data, you can log in to the participating services with just one click. One log-in. One profile. So many possibilities.

M Login



Publisher:	Münchner Verkehrsgesellschaft mbH (MVG) Mobilitätskommunikation 80287 Munich
Photos:	Archiv der MVG, Siemens AG, Freunde des Münchner Trambahnmuseums e. V.
Graphic design:	Serviceplan MAKE GmbH & Co. KG
Printing:	SWM in-house printers
As at:	8/2024
Product code:	DE134334

MVG-Hotline: +49 800 344 22 66 00  
 freephone service number, available around the clock

mvg.de   



A subsidiary of  
Stadtwerke München



# MVG – Mobility in Munich

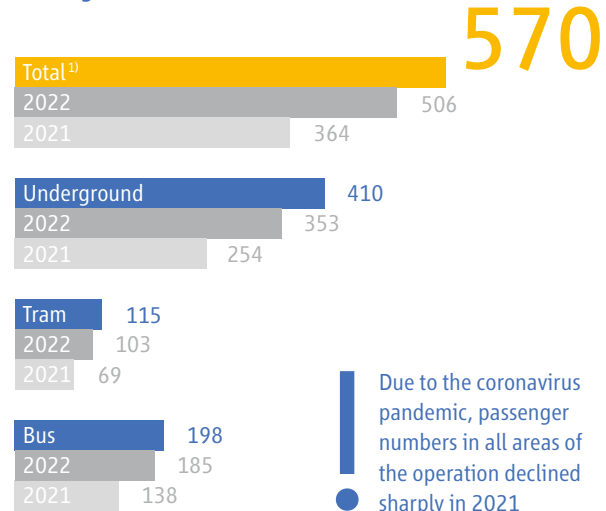
## Facts and figures 2024

## We make mobility attractive

Around 1.51 million people live in Munich, and 1.74 million within the area of the MVG transport network. Our attractive around-the-clock services keep the city and its environs on the go. We ensure reliable underground train, tram and bus services, modernise infrastructure and improve public transport with new bus connections and new routes such as the tram ring line in the west of Munich (Westtangente).

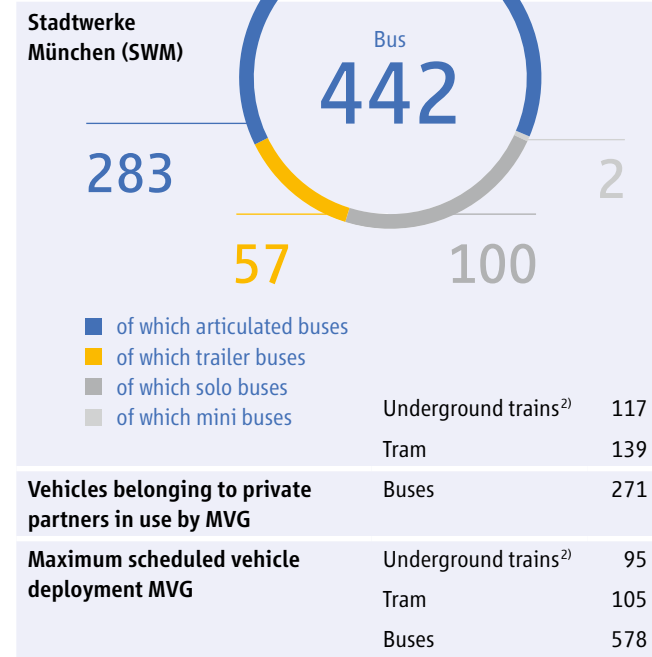
Another focus is the modernisation and expansion of our fleet with trains and buses that carry even more passengers. By 2025, a total of 85 Type C2 underground trains will be in operation. And by spring 2025, our fleet of electric buses will grow to 132 vehicles. In 2026, 73 new Avenio trams are due for delivery. We will also be launching a new bike-sharing system in 2025. In addition, passengers can look forward to a new on-demand service with electric cars to take them to the destinations of their choice. Have a good trip!

### Passengers in 2023 in millions



1) Transfer passengers counted once.

### Vehicle Fleet



### Mobility experts



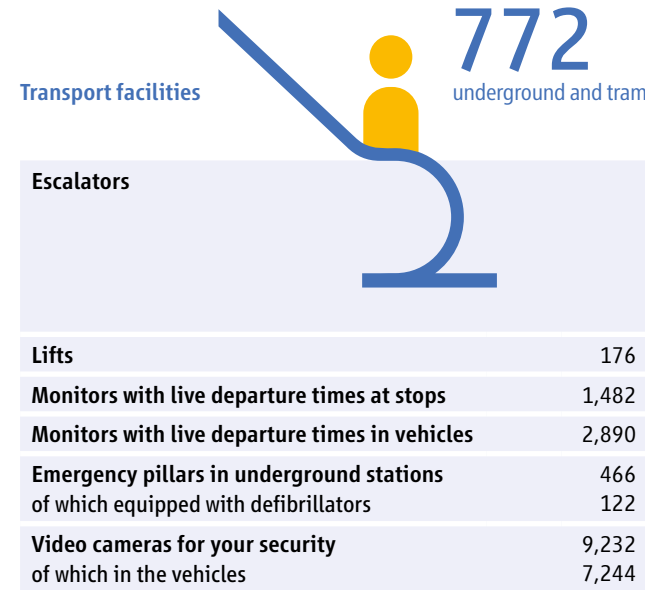
2) A type A or B underground train usually comprises three twin railcars or six individual railcars. In the case of continuous C-type trains, six individual cars are also counted as one train.

3) The total number of employees and drivers includes both full and part-time staff.

### Transport network

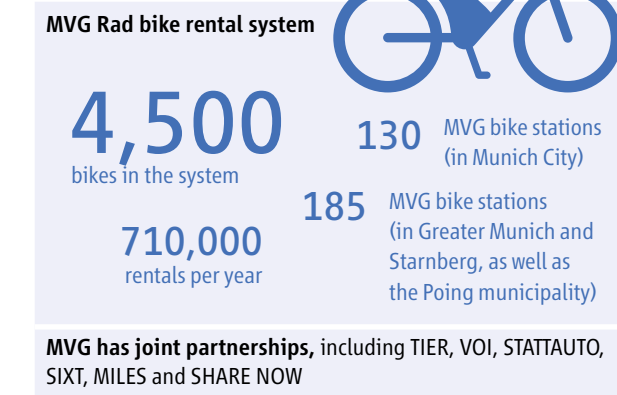
<b>Routes operated in km</b>	Underground	95
	Tram	82
	Bus	544
<b>Lines</b>	Underground	8
	Tram	12
	Bus	79
<b>Night lines</b>	Tram	4
	Bus	15
<b>Stations<sup>4)</sup></b>	Underground	100
<b>Stops</b>	Tram	173
	Bus	1,080

### Transport facilities



4) Four interchange stations counted twice.

### Other mobility solutions



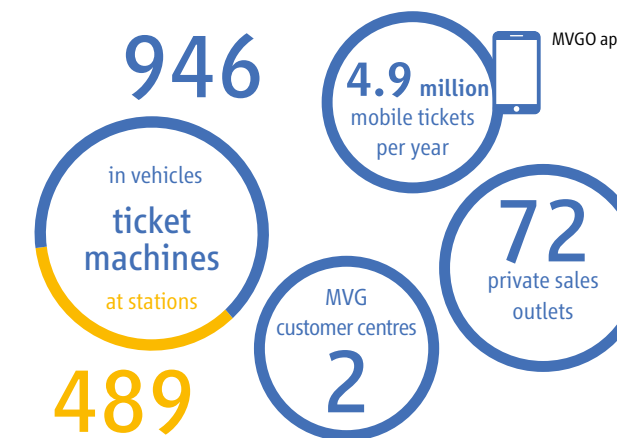
### Our tickets

Number of subscriptions:<sup>5)</sup> approx. **532,000**

The most popular tickets (tickets sold in a year):

- ① **Single journey (Zone M)** . . . . . approx. **4,460,000**
- ② **Strip card** . . . . . approx. **3,206,000**
- ③ **Day ticket (single zone M)** . . . . . approx. **1,219,000**

### Tickets can be bought here



5) Including MVV 365 Euro tickets and the Deutschlandticket rail pass.

### Service

**MVG customer centres at Marienplatz and Hauptbahnhof** (mezzanine levels)  
Monday to Friday 8 a.m. to 8 p.m.  
Saturday 9 a.m. to 4 p.m.

### How to contact us

**MVG passenger feedback**  
E-mail: kundendialog@mvg.de  
Münchner Verkehrsgesellschaft (MVG), Kundendialog  
80287 Munich  
Search online at: mvg.de/services/kontakt



### MVG Hotline

Tel: 0800 344 22 66 00  
freephone service number, available around the clock

### MVG Lost Property Office

Elsenheimerstraße 61, 1<sup>st</sup> floor  
80687 Munich  
Search online at: mvg.de/fundbuero



Approx. <b>36,000</b> found items per year	<b>Mobile phones</b>	approx. 1,000 per year
	<b>Wallets</b>	approx. 970 per year
	<b>Bags</b>	approx. 940 per year

### Contact

Emmy-Noether-Straße 2  
80992 Munich  
Tel: 089 2191-0  
**mvg.de**

Additional data, information, facts and figures at **mvg.de**

