

Our vehicles



Type	Number ¹⁾	Year of manufacture	Length	Power	Floor space
A	41	1970–1983	111.45 m	2,160 kW	870
B	18	1987–1995	112.65 m	2,616 kW	870
C1	17	2000–2005	114.82 m	2,400 kW	912
C2	46	seit 2013	115 m	3,360 kW	940



Type	Number	Year of manufacture	Length	Power	Floor space
R2/R2b	13/55	1994–1997	27.39 m	360 kW	157/164
R3	20	1999–2001	36.58 m	480 kW	218
S1 (Variobahn)	14	2009–2011	33.94 m	360 kW	221
T (Avenio) ²⁾	30	seit 2013	36.90 m	600 kW	215



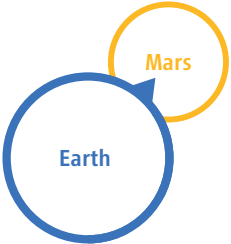
Type	Number	Length	Power	Floor space
Solo bus	86	approx. 12 m	206–271 kW	approx. 65
Articulated bus	257	approx. 18 m	220–271 kW	approx. 100
Trailer bus	57	approx. 23 m	265–271 kW	approx. 130

The fleet will be fully electrified by 2035.
The number of electric buses (see selection in photo) is continuing to grow.

1) A train consists of several units. For type A and B, a train generally comprises three twin railcars. Vehicles of type C1 and C2 are articulated trains that are walkable from end to end and are made up of six parts.
2) Type T (Avenio) consists of two-, three- and four-car trains. Length, power and space are given for the four-part T 4.7.

Kilometres travelled

Total:
59,600,000 km
which approximately corresponds to the shortest distance between Earth and Mars



Under-ground:	12,100,000 km corresponds to around 300 journeys round the world
Tram:	9,000,000 km corresponds to about 11,200 trips from the International Space Station to the Earth and back
Bus:	38,500,000 km corresponds to around 50 journeys from the Earth to the moon and back

Kilometres travelled by a vehicle until it is removed from service

Under-ground:	around 5,400,000 km
Tram:	around 2,500,000 km
Bus:	around 800,000 km

Cruising speed

	Average cruising speed	Maximum speed ³⁾
Under-ground:	34.9 km/h	80 km/h (90 km/h)
Tram:	18.5 km/h	60 km/h (70 km/h)
Bus:	18.1 km/h	60 km/h (up to 100 km/h)

Time for a wash!

Time a vehicle takes in the washing station until a vehicle is clean:
Underground: 36 min. Tram: 15 min. Bus: 3 min.

3) The maximum operating speed is lower than the maximum speed technically possible, which is in brackets.

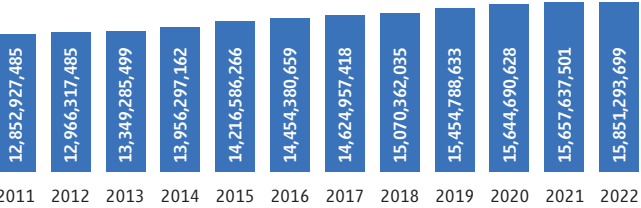
Driven by green electricity

Efficient public transport means environmental protection in action. **Thanks to green electricity, we already run 80 percent of our underground and tram lines in a climate-neutral manner.** The next step is to convert all buses to electric drive by 2035. The e-bus depot that opened in Moosach in late 2022 serves as the basis for this. Our vision: The best of Munich’s mobility for a liveable and well-connected city.

Constant fresh air

Complete air exchange in an underground train takes only about three minutes. Ventilation and air conditioning systems, folding windows plus the regular opening of doors at bus and tram stops also ensure fresh air in the passenger compartment in just a few minutes.

Service offering in usable space kilometres⁴⁾



Records

The deepest underground station:	25 m	Karlsplatz (Stachus)
The longest underground line:	27.4 km	U6 Klinikum Großhadern – Garching-Forschungszentrum
The longest tram line:	16.8 km	Tram 17 Amalienburgstraße – St. Emmeram
The longest bus line:	27 km	Bus 157 Pasing Bahnhof – Germering

4) The service offering is calculated in usable space kilometres. To do this, the kilometres travelled by all vehicles are multiplied by the number of seats or standing places available.

Our apps



Find them in the App Store or with Google Play

MVGO is the free mobility app for Munich and the surrounding area that connects local public transport and sharing offerings. It includes: Mobile tickets, connection information, live departure times, bikes, e-scooters and car-sharing. The Deutschlandticket and the Bavarian discount ticket for students, apprentices and volunteer workers are also available in the MVGO at any time. MVGO is being expanded bit by bit and is getting more features and services – including the MVG Fahrinfo München (MVG travel info Munich). MVGO – one app, travel anywhere!



HandyParken München offers digital parking tickets for paid parking spaces in Munich. With their access data, HandyParkers can also use the other MVG apps and switch to public transport or rent an MVG bike in seconds.

M-Login

Your access to Munich’s digital services

Our apps work using the M-Login: With your M-Login access data, you can log in to the participating services with just one click. One log-in. One profile. So many possibilities.

M Login



Publisher:	Münchner Verkehrsgesellschaft mbH (MVG) Mobilitätskommunikation 80287 Munich
Photos:	Archiv der MVG, Siemens AG, Freunde des Münchner Trambahnmuseums e. V.
Graphic design:	Serviceplan MAKE GmbH & Co. KG
Printing:	Braun & Sohn Druckerei GmbH & Co. KG
As at:	08/2023
Product code:	DE134334

MVG-Hotline: +49 800 344 22 66 00
freephone service number, available around the clock

mvg.de   



A subsidiary of
Stadtwerke München



MVG –
Mobility in Munich

Facts and figures
2023

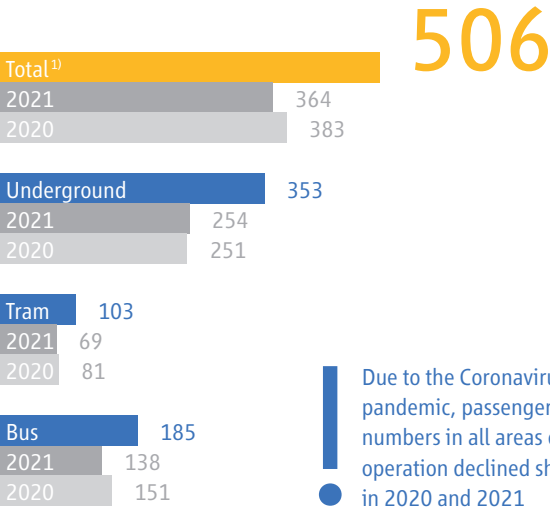
**DIE
MOBILITÄTS-
MACHER*INNEN.**

Munich’s Mobility Experts

Munich is growing. At present, around **1.51 million people live in the city** (1.74 million in the transport area), and this trend is rising. The coming years will determine whether Munich will stay on track. The same goes for public transport. That’s why **MVG’s mobility experts are getting down to work**: We are modernising and expanding local public transport one step at a time – with attractive bus connections, new tram routes and underground projects such as the U9. In addition, we are renewing and extending our vehicle fleets to keep Munich running.

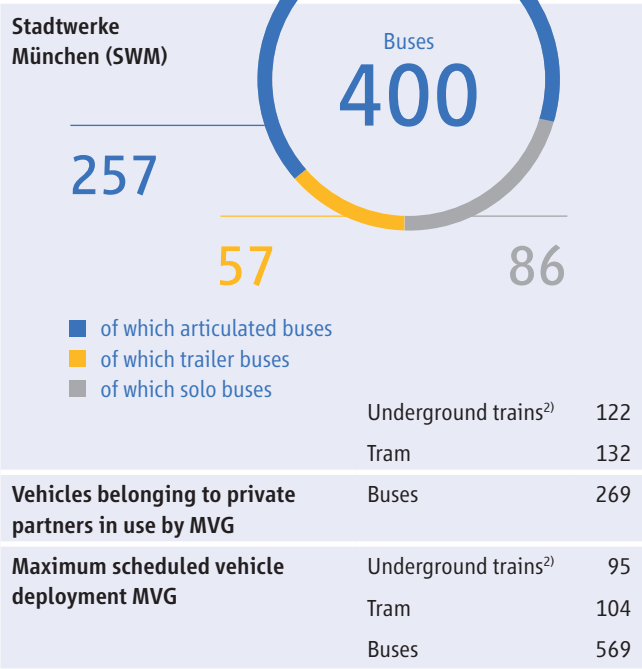
For example, a total of 22 new Type C2 underground trains are coming to Munich by 2024. In the case of buses, we will increase the electric bus fleet to 132 vehicles by spring 2025. And in the case of trams, we expect 73 new Avenio type vehicles by 2026.

Passengers in 2022 in millions



1) Transfer passengers counted once.

Vehicle Fleet



Mobility experts

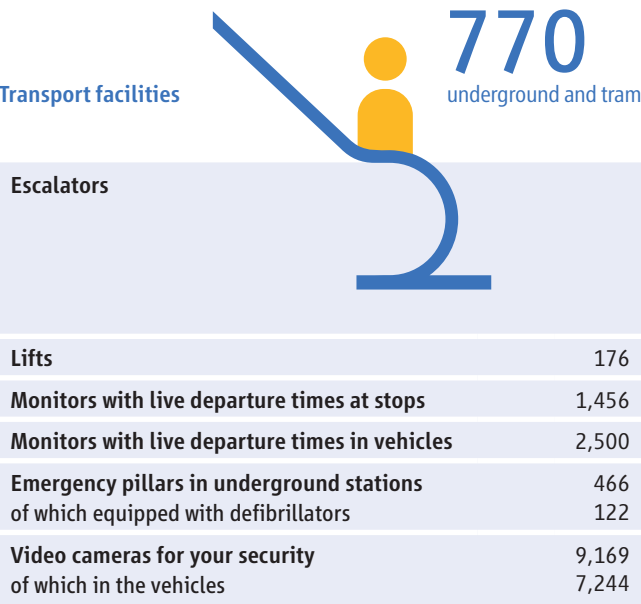


2) A type A or B underground train usually comprises three twin railcars or six individual railcars. In the case of continuous C-type trains, six individual cars are also counted as one train.
3) Employees and drivers refers to the number of persons employed.

Transport network

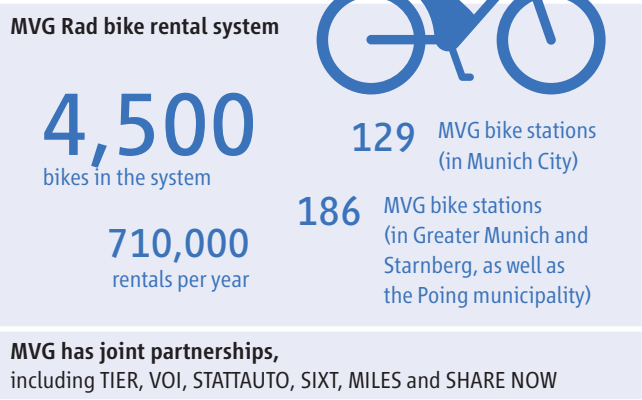
Routes operated in km	Underground	95
	Tram	82
	Bus	545
Lines	Underground	8
	Tram	12
	Bus	79
Night lines	Tram	4
	Bus	15
Stations ⁴⁾	Underground	100
Stops	Tram	172
	Bus	1,074

Transport facilities

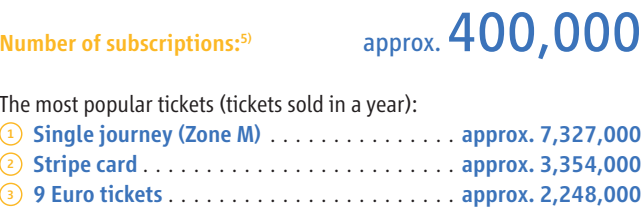


4) Four interchange stations counted twice.

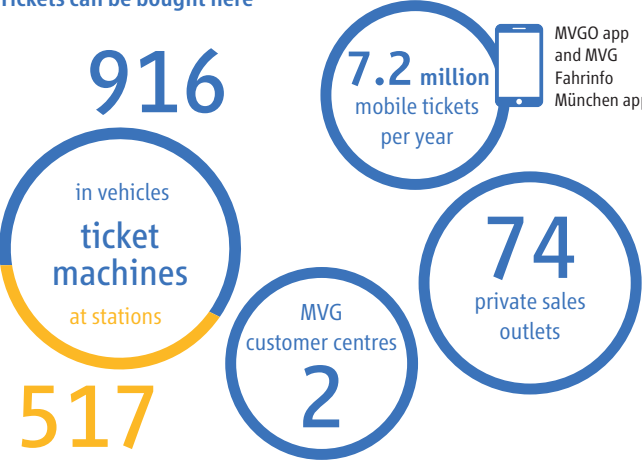
Other mobility solutions



Our tickets



Tickets can be bought here



5) Including MVV 365 Euro tickets.

Service

MVG customer centres at Marienplatz and Hauptbahnhof (mezzanine levels)
Monday to Friday 08:00–20:00
Saturday 09:00–16:00

How to contact us

MVG passenger feedback
E-mail: kundendialog@mvg.de
Münchner Verkehrsgesellschaft mbH, Kundendialog
80287 Munich

MVG Hotline
Tel: 0800 344 22 66 00
freephone service number, available around the clock

MVG Lost Property Office
Elsenheimerstraße 61, 1st floor
80687 Munich
Search online at: mvg.de/fundbuero

Approx. 36,000 found items per year	Mobile phones	approx. 1,000 per year
	Wallets	approx. 970 per year
	Bags	approx. 940 per year

Contact

Emmy-Noether-Straße 2
80992 Munich
Tel: 089 2191-0
mvg.de

Additional data, information, facts and figures at **mvg.de**

